



**Stadt Zürich**  
Statistik

376800

**ESSENTIAL  
ZURICH**

Supported by



**Zürcher  
Kantonalbank**

## Publication Data

Published, edited

and administered by

E-Mail

Internet

Ordering

Stadt Zürich, Präsidialdepartement, Statistik Stadt Zürich

statistik@zuerich.ch

[www.stadt-zuerich.ch/statistik](http://www.stadt-zuerich.ch/statistik)

Statistik Stadt Zürich, Napfgasse 6, 8001 Zürich

Phone 044 250 48 00

Fax 044 250 48 29

Translation

Translingua AG

Printed by

Fotorotar AG

Design

Monica Huwiler/Marc Droz/Regula Ehrliholzer

Statistik Stadt Zürich

Cover Photography

Sihlcity

Published annually in German and English

Edition June 2008

© 2008 Statistik Stadt Zürich

Reproduction – except for commercial

purposes – permitted if sources are quoted

Committed to Excellence according EFQM

The publisher would like to thank the Zürcher Kantonalbank for its financial support. Its contribution makes the publication and distribution of this brochure possible.



**Zürcher  
Kantonalbank**

## Contents

Zurich in numbers	2
Resident population	4
City area, climate and environment	10
Work and employment	11
Prices and index	12
Company and segment structure	14
Construction and housing	16
Tourism	20
Traffic	21
Banking	22
Public administration	23
Social security / Health	24
Education	25
Culture and sport	26
Politics	27
Public finances	28
Crime	29
City of Zurich in comparison	30
Glossary	32

## Explanation of symbols

A dash (–) instead of a number means there is no occurrence (= zero).

A zero (0 or 0,0) instead of another number identifies a variable that is less than one half of the unit used.

Three dots (...) instead of a number mean that the number is unavailable or was omitted because it is insignificant.

A forward slash (/) between year dates indicates the associated numbers as the annual average, a hyphen (–) as sums of the stated period.

A sinuous line (~) between two year dates indicates school or business years, sport seasons, etc., rather than calendar years.

# Geography

The city of Zurich is divided into **12** districts and **34** precincts. The agglomeration of Zurich consists of Zurich city itself and a further **130** communities, including **24** in the canton of Argovia and **3** in canton Schwyz. Zurich's metropolitan area consists of **11** agglomerations and the single town of Einsiedeln.

# Population

Zurich has a resident population of over **376800** and is Switzerland's largest city. More than **115300** foreign citizens from **166** nations live in the city of Zurich. The Germans are the largest national group with **25379** citizens, coming before Italy with **13715** and «Serbia and Montenegro» with **10972** persons. The city of Zurich has grown by **15800** persons since the year 2000. The growth in 2007 amounted to **6753** persons. The highest ever population count of **445314** was reached in July 1962. **1.11** million people live in the agglomeration of Zurich; the city's metropolitan area has a population of **1.72** million.

# Building and habitation

2007 saw the completion of **2263** residences – the largest number in **40** years.

## Commerce

Every **9th** workplace in Switzerland is located in the city of Zurich. **82** of Switzerland's 208 banking establishments have their head offices in the city of Zurich. The total assets of these banks equate to a proportion of **85.1** percent of the total value of monies managed in Switzerland. **110** hotels with more than **11500** hotel beds provide room for **2.5** million overnight stays. Zurich airport serves around **20** million passengers every year.

## Politics

**9** city councillors make up the city's executive (city council); **125** municipal councillors form the legislative (municipal council).

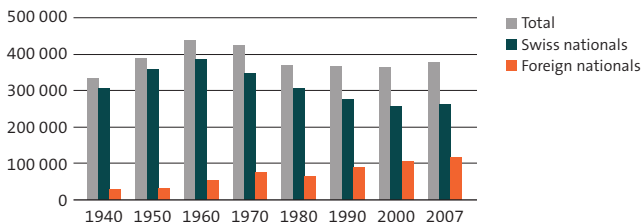
## RESIDENT POPULATION

**The city of Zurich is very popular.** The resident population of Switzerland's largest city started increasing again at the end of the nineties after decades of decreasing year after year with just a few exceptions. In 2007 alone the number of residents grew by just under 7000 or 1.8 percent to 376 800. However, the city is still a long way away from its largest ever resident population of 445 314, as counted at the end of July 1962.

Foreign citizens from around the globe are the main reason for the growth Zurich has experienced over the last few years. Their proportion of the total population lies at just over 30 percent. Four out of every five foreign citizens living in Zurich are European and more than one half of those – nearly 60 percent – are citizens of one of the 27 countries of the EU. The largest national section of the foreign population is German. They overtook the Italians to reach the number one position a few years ago.

For a few years now the city of Zurich has shown an excess of births over deaths after more than thirty years of more deaths than births each year.

### Resident population



### Resident population

	1990	2000	2007
<b>Total</b>	<b>356 352</b>	<b>360 980</b>	<b>376 815</b>
Women	187 394	186 546	191 581
Men	168 958	174 434	185 234
Swiss nationals	271 579	255 576	261 436
Foreign nationals	84 773	105 404	115 379

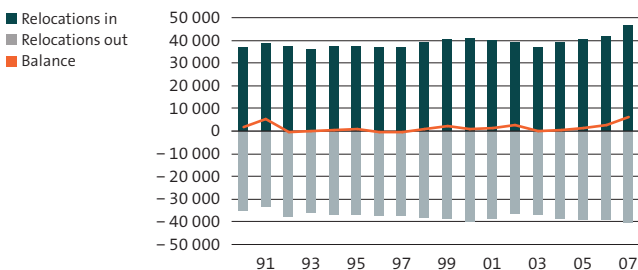
## Births

	1990	2000	2007
<b>Live births in total</b>	<b>3 046</b>	<b>3 577</b>	<b>4 119</b>
Girls	1 445	1 681	2 008
Boys	1 601	1 896	2 111
Swiss nationals	2 129	2 027	2 790
Foreign nationals	917	1 550	1 329

## Deaths

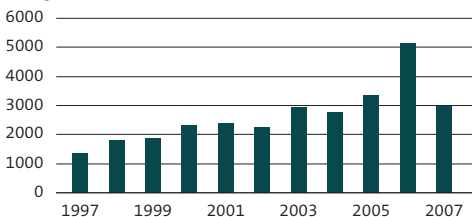
	1990	2000	2007
<b>Total</b>	<b>4 330</b>	<b>3 996</b>	<b>3 480</b>
Women	2 257	2 206	1 994
Men	2 073	1 790	1 486
Swiss nationals	4 019	3 664	3 172
Foreign nationals	311	332	308
Average age at death (years)	...	77,5	79,2

## Relocating in, Relocating out, Balance



## Acquisition of Swiss nationality

## Foreign nationals

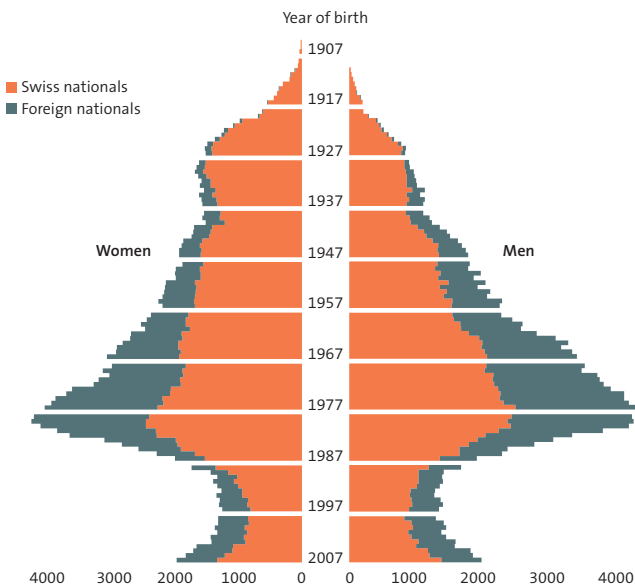


## RESIDENT POPULATION

### Marriage and divorce

	1990	2000	2007
Marriages	2 804	3 463	3 380
Divorces	1 237	2 504	1 643

### Age structure of the population, 2007



### Population by main language group

	1980	1990	2000
German	295 410	281 317	282 277
French	8 647	7 953	7 746
Italian	30 636	24 948	17 063
Rhaeto-Romanic	2 487	1 257	990
Other languages	32 342	49 568	55 197

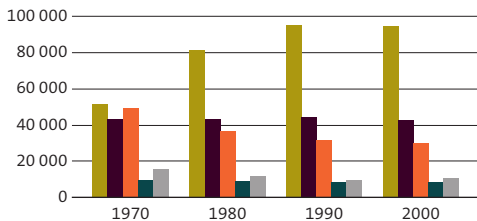
### Population by family type

	1997	2000	2007
<b>Total</b>	<b>358 594</b>	<b>360 980</b>	<b>376 815</b>
Married couple, no children	75 486	70 598	63 168
Married couple with children	57 346	56 654	57 768
Children of married couples	51 597	51 000	51 312
Single parent with children	8 716	9 702	12 675
Children of single parents	12 224	13 727	17 800
Other persons	153 225	159 299	174 092



## Household type

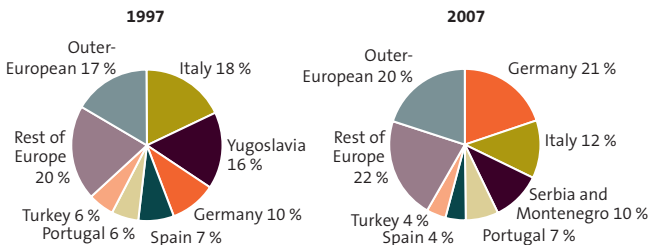
- Single person households
- Couples without children
- Couples with children
- Single parent households
- Other private households



## Foreign resident population, 2007

	Total	Permanent residents	Annual residents
<b>Total</b>	<b>115 379</b>	<b>63 434</b>	<b>48 776</b>
<b>Europe (EU)</b>	<b>67 685</b>	<b>37 007</b>	<b>30 484</b>
Germany	25 379	8 741	16 512
France	2 135	655	1 471
Great Britain	2 277	758	1 517
Italy	13 715	11 829	1 876
Austria	3 709	2 210	1 497
Portugal	7 850	5 240	2 605
Spain	4 609	3 879	722
<b>Rest of Europe</b>	<b>24 511</b>	<b>18 342</b>	<b>5 464</b>
Bosnia-Herzegovina	2 099	1 657	355
Croatia	2 478	2 118	349
Macedonia	2 607	2 174	417
Serbia and Montenegro	10 972	8 543	1 981
Turkey	4 585	3 372	1 128
<b>Outer-European</b>	<b>23 183</b>	<b>8 085</b>	<b>12 828</b>
Sri Lanka	2 859	356	2 169
USA	1 803	618	1 180

## Foreign resident population

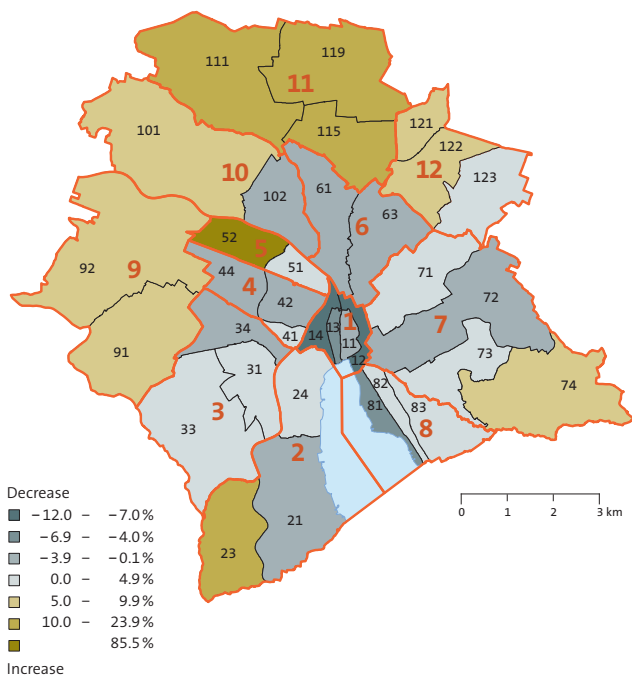


## RESIDENT POPULATION

### Resident population by origin and precinct, 2007

	Total	Swiss nationals	Foreign nationals	Proportion of foreign nationals
<b>Entire city</b>	<b>376 815</b>	<b>261 436</b>	<b>115 379</b>	<b>30.6</b>
<b>District 1</b>	<b>5 607</b>	<b>4 027</b>	<b>1 580</b>	<b>28.2</b>
Rathaus	3 079	2 234	845	27.4
Hochschulen	698	483	215	30.8
Lindenhof	954	727	227	23.8
City	876	583	293	33.4
<b>District 2</b>	<b>29 421</b>	<b>22 035</b>	<b>7 386</b>	<b>25.1</b>
Wollishofen	15 744	11 976	3 768	23.9
Leimbach	5 204	3 919	1 285	24.7
Enge	8 473	6 140	2 333	27.5
<b>District 3</b>	<b>46 108</b>	<b>31 642</b>	<b>14 466</b>	<b>31.4</b>
Alt-Wiedikon	15 440	10 386	5 054	32.7
Friesenberg	10 296	7 962	2 334	22.7
Sihlfeld	20 372	13 294	7 078	34.7
<b>District 4</b>	<b>27 056</b>	<b>15 776</b>	<b>11 280</b>	<b>41.7</b>
Werd	3 944	2 571	1 373	34.8
Langstrasse	10 310	6 120	4 190	40.6
Hard	12 802	7 085	5 717	44.7
<b>District 5</b>	<b>12 714</b>	<b>8 366</b>	<b>4 348</b>	<b>34.2</b>
Gewerbeschule	9 706	6 153	3 553	36.6
Escher Wyss	3 008	2 213	795	26.4
<b>District 6</b>	<b>30 203</b>	<b>22 574</b>	<b>7 629</b>	<b>25.3</b>
Unterstrass	20 243	15 245	4 998	24.7
Oberstrass	9 960	7 329	2 631	26.4
<b>District 7</b>	<b>34 843</b>	<b>26 811</b>	<b>8 032</b>	<b>23.1</b>
Fluntern	7 455	5 486	1 969	26.4
Hottingen	10 284	7 607	2 677	26.0
Hirslanden	6 977	5 492	1 485	21.3
Witikon	10 127	8 226	1 901	18.8
<b>District 8</b>	<b>15 431</b>	<b>11 035</b>	<b>4 396</b>	<b>28.5</b>
Seefeld	4 920	3 405	1 515	30.8
Mühlebach	5 567	4 056	1 511	27.1
Weinegg	4 944	3 574	1 370	27.7
<b>District 9</b>	<b>46 875</b>	<b>31 796</b>	<b>15 079</b>	<b>32.2</b>
Albisrieden	17 527	13 152	4 375	25.0
Altstetten	29 348	18 644	10 704	36.5
<b>District 10</b>	<b>36 474</b>	<b>27 422</b>	<b>9 052</b>	<b>24.8</b>
Höngg	21 075	16 758	4 317	20.5
Wipkingen	15 399	10 664	4 735	30.7
<b>District 11</b>	<b>63 092</b>	<b>41 732</b>	<b>21 360</b>	<b>33.9</b>
Affoltern	20 948	14 285	6 663	31.8
Oerlikon	20 754	13 675	7 079	34.1
Seebach	21 390	13 772	7 618	35.6
<b>District 12</b>	<b>28 991</b>	<b>18 220</b>	<b>10 771</b>	<b>37.2</b>
Saatlen	6 842	4 629	2 213	32.3
Schwamendingen-Mitte	10 806	6 479	4 327	40.0
Hirzenbach	11 343	7 112	4 231	37.3

## Changes in resident population by precinct, 1997–2007

**District 1**

11 Rathaus  
12 Hochschulen  
13 Lindenhof  
14 City

**District 2**

21 Wollishofen  
23 Leimbach  
24 Enge

**District 3**

31 Alt-Wiedikon  
33 Friesenberg  
34 Sihlfeld

**District 4**

41 Werd  
42 Langstrasse  
44 Hard

**District 5**

51 Gewerbeschule  
52 Escher Wyss

**District 6**

61 Unterstrass  
63 Oberstrass

**District 7**

71 Fluntern  
72 Hottingen  
73 Hirslanden  
74 Witikon

**District 8**

81 Seefeld  
82 Mühlebach  
83 Weinegg

**District 9**

91 Albisrieden  
92 Altstetten

**District 10**

101 Höngg  
102 Wipkingen  
123 Hirzenbach

**District 11**

111 Affoltern  
115 Oerlikon  
119 Seebach

**District 12**

121 Saatlen  
122 Schwamendingen-Mitte  
123 Hirzenbach

## CITY AREA, CLIMATE AND ENVIRONMENT

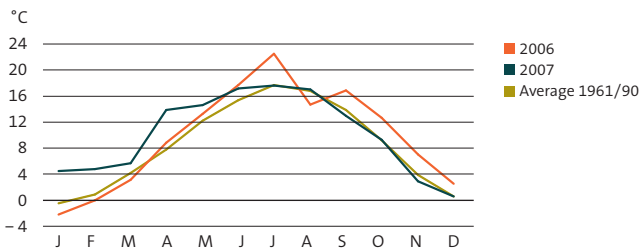
### Urban area, 2007

Total area including water bodies	91.9 km <sup>2</sup>
Longest north-south expansion	12.7 km
Longest east-west expansion	13.4 km
Highest point	871 m above sea level (Üetliberg Kulm)
Lowest point	392 m above sea level (Limmatufer)
Height of lake level	405,94 m above sea level

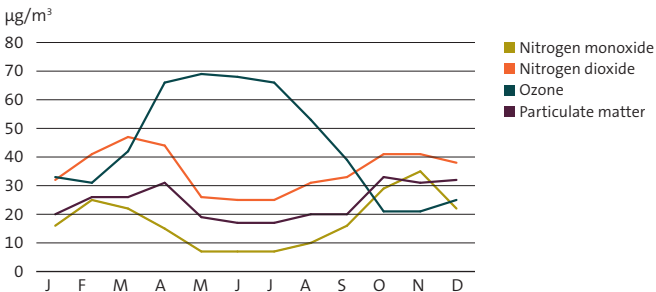
### Urban area, area in hectares, 2007

<b>Total</b>	<b>9 188</b>
Land area excluding woodland	6 500
Buildings	1 084
Traffic area	1 214
Other	4 202
Woodland	2 162
Water bodies	526

### Air temperature by month



### Concentration of pollution by month, 2007



Employees

	2005	2006	2007
<b>City of Zurich</b>	<b>328 200</b>	<b>330 300</b>	<b>348 400</b>
Women	143 900	144 800	152 400
Men	184 300	185 500	196 000
2nd Sector	34 900	33 600	34 100
3rd Sector	293 300	296 700	314 300
Full-Time	221 800	222 500	234 300
Part-Time	106 400	107 800	114 000
<b>Canton of Zurich</b>	<b>723 800</b>	<b>733 500</b>	<b>766 900</b>

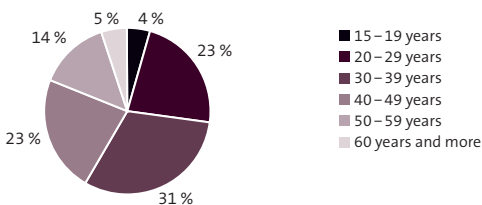
Unemployed

	2005	2006	2007
<b>Total</b>	<b>9 042</b>	<b>7 010</b>	<b>5 847</b>
Women	4 243	3 247	2 636
Men	4 799	3 763	3 211
Swiss nationals	4 764	3 733	3 084
Foreign nationals	4 278	3 277	2 763

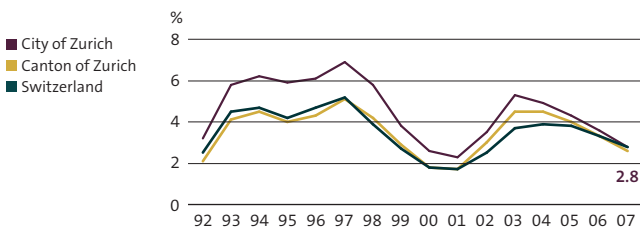
At the end of 2007 the city of Zurich counted around 348 400 jobholders of which 152 400 were female, a ratio equal to 43.7 percent. Two out of three jobholders are in full employment.

Just over half of those unemployed are Swiss nationals.

Unemployed by age group, 2007



Unemployment rate



## PRICES AND INDEX

### Zurich index for residential construction costs, Basis April 2005 = 100

CCP No.	Construction work	Weight (%)	Index (points)		Change (%)
			April 2007	April 2008	
CCP = Construction Cost Plan					
...	<b>Total (CCP 1, 2, 4 and 5)</b>	<b>100.0000</b>	<b>106.2</b>	<b>110.5</b>	<b>4.0</b>
1	Preparatory work	7.0823	108.6	112.3	3.4
2	Building	84.7190	106.3	110.5	4.0
4	Environment	5.6480	104.5	106.7	2.0
5	Ancillary construction costs and intermediate accounts	2.5507	101.0	111.0	9.9
...	<b>Classification</b>				
22–22	Building shell	38.2687	108.0	112.5	4.1
23–28	Interior work	33.4055	103.4	105.9	2.4
1, 29, 4, 5	Other costs	28.3258	107.1	113.1	5.6

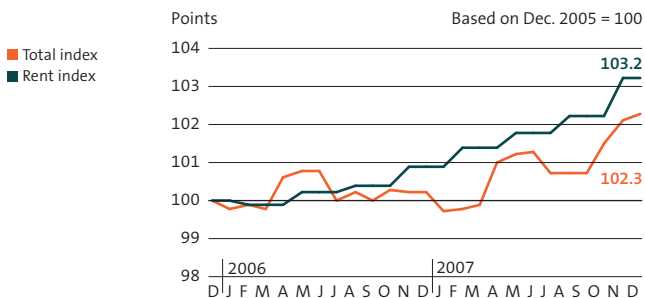
### Zurich city index for consumer prices

Index position	Weight (%)	Annual average (points)		Change (%) against prev. year	
		2007	2007	2004–05	2005–06
Based on December 2005 = 100					
<b>Total</b>	<b>100.000</b>	<b>100.9</b>	<b>100.9</b>	<b>0.7</b>	<b>0.7</b>
<b>Main groups</b>					
Foodstuffs and non-alcoholic beverages	10.544	101.8	101.8	-0.2	0.5
Alcoholic beverages and tobacco	1.643	102.1	102.1	1.0	2.1
Shoes and clothing	4.432	94.3	94.3	1.1	0.3
Housing and energy	28.439	101.9	101.9	1.7	1.5
Household effects and housekeeping	4.465	100.8	100.8	0.2	0.3
Healthcare	15.266	100.0	100.0	-0.2	0.1
Traffic	10.362	102.7	102.7	2.6	1.1
Telecommunication	2.637	95.5	95.5	-6.9	-3.0
Leisure time and culture	8.653	99.0	99.0	-0.2	-0.4
Education and teaching	0.539	101.8	101.8	2.3	1.2
Restaurants and hotels	8.528	102.5	102.5	1.2	1.3
Other goods and services	4.492	100.9	100.9	0.8	0.2
<b>Type of good</b>					
Goods	41.893	99.9	99.9	0.9	0.1
Services	58.107	101.6	101.6	0.6	1.1
<b>Origin of goods</b>					
Domestic	73.205	101.3	101.3	0.4	0.9
Abroad	26.795	99.7	99.7	1.8	0.1

Average prices

	Quantity	2006	2007
Entrecôte (beef)	1 kg	58.97	61.26
Beef ragout	1 kg	25.32	24.77
Cervelat sausage	1 unit	1.24	1.24
Milk, pasteurised	1 litre	1.52	1.53
Top quality butter	100 g	1.64	1.59
Emmental cheese	100 g	2.13	2.13
Domestic eggs	1 piece	0.62	0.64
Foreign eggs	1 piece	0.32	0.32
Potatoes	1 kg	2.31	2.37
Coffee (espresso)	1 cup	3.80	3.78
Heating oil (1501 – 3000 litre)	100 litre	83.41	83.72
Petrol, lead-free	1 litre	1.65	1.70

Zurich city index for consumer prices

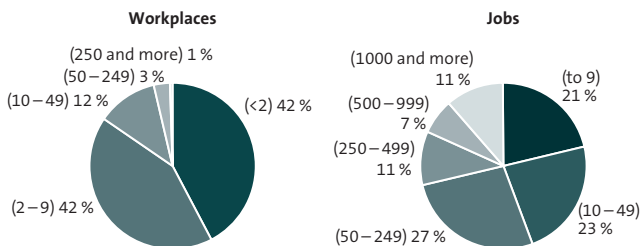


## COMPANY AND SEGMENT STRUCTURE

**Zurich's economy** is characterised by a large number of small companies. Around 85 percent of the 25 000 places of work in the city are provided by micro-companies with a maximum equivalent of 9 full-time jobs each.

Zurich is a city of service providers, with 90 percent of 330 000 jobs located in the third economic sector. The significance of the service industry has experienced positive growth for decades, whilst the secondary economic sector of industry and construction now comprises just 35 000 jobs. Education, health and social services and public administration are among the largest employers with a total of 77 800 employees, followed by banking and finance with 55 000 employees.

### Workplaces and jobs by company size (full-time equivalent), 2005



### Company count

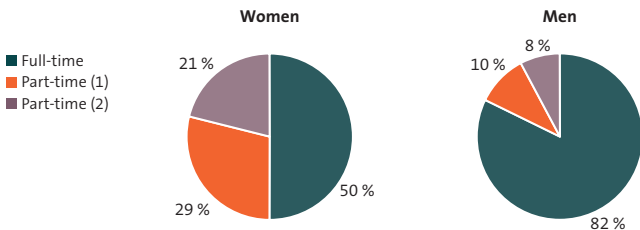
	1998	2001	2005	2001-05 (%)
<b>Workplaces</b>				
<b>Total</b>	<b>25 494</b>	<b>26 026</b>	<b>24 840</b>	<b>- 4.6</b>
Secondary sector	3 052	2 861	2 528	- 11.6
Tertiary sector	22 442	23 165	22 312	- 3.7
<b>Employees</b>				
<b>Total</b>	<b>315 287</b>	<b>340 095</b>	<b>329 014</b>	<b>- 3.3</b>
Secondary sector	45 070	42 313	35 020	- 17.2
Tertiary sector	270 217	297 782	293 994	- 1.3
Women	132 627	145 553	142 500	- 2.1
Men	182 660	194 542	186 514	- 4.1
Swiss nationals	245 894	262 646	251 711	- 4.2
Foreign nationals	69 393	77 449	77 303	- 0.2
Full-time employees	228 520	240 770	224 660	- 6.7
Part-time employees	87 767	99 325	104 354	5.1
Part-time 1	47 048	53 536	59 403	11.0
Part-time 2	39 719	45 789	44 951	- 1.8
<b>Full-time equivalent</b>				
<b>Total</b>	<b>269 208</b>	<b>288 064</b>	<b>275 307</b>	<b>- 4.4</b>



Persons employed by branches

	1998	2001	2005	2001-05 (%)
<b>Total</b>	<b>315 287</b>	<b>340 095</b>	<b>329 014</b>	<b>-3.3</b>
<b>Secondary sector</b>	<b>45 070</b>	<b>42 313</b>	<b>35 020</b>	<b>-17.2</b>
Foodstuffs and beverages	1 719	1 168	1 317	12.8
Publishing and printing	8 300	8 741	7 058	-19.3
Mechanical engineering	3 927	2 901	2 344	-19.2
Energy supply	1 004	905	1 142	26.2
Construction	17 904	19 118	16 315	-14.7
<b>Tertiary sector</b>	<b>270 217</b>	<b>297 782</b>	<b>293 994</b>	<b>-1.3</b>
Wholesale	15 040	13 985	13 592	-2.8
Retail trade and repairs	23 697	22 968	20 898	-9.0
Hotels and restaurants	19 292	20 950	19 823	-5.4
Telecommunication	11 836	12 559	11 825	-5.8
Banking establishments	38 085	39 512	37 165	-5.9
Insurance companies	12 447	13 554	11 975	-11.6
Corporate services	38 111	47 304	47 666	0.8
Public administration, Defence	11 024	11 758	13 877	18.0
Education and teaching	24 704	28 362	28 321	-0.1
Health and welfare	30 119	32 776	35 530	8.4

Degree of employment by gender, 2005



**Zurich is not a city of skyscrapers:** only thirteen buildings reach a height of twenty storeys. But the city is on the rise nonetheless. Over the past fifteen years the volume of all the buildings grew by 10.8 percent, whilst the consumption of land increased by just 1.6 percent. Buildings have therefore gained an average of 9 percent in height. This growth is spear-headed by utility buildings, which, while increasing in volume, have actually released land areas for use by 6.1 percent since 1992. The recovered space was used to construct residential buildings.

The construction of housing has seen turbulent developments over the past few years. This has enabled the supply of available residencies to adapt to the change in demand. Whilst the quantity of small apartments (1 to 2 rooms) has remained constant, the number of five-room flats has increased by one-third over the last ten years. The rooms in the new apartments are not only greater in number but also in size.

Of course, the increase in space requirements comes at a cost. Nonetheless, demand far exceeds supply, even though the city is not exactly renowned for its cheap housing. For years now the number of unoccupied apartments has been far lower than experts would have believed to be possible.

### Approved new constructions

	1997	2006	2007
<b>Newly approved</b>	<b>223</b>	<b>195</b>	<b>202</b>
Apartments 1–3 rooms	479	1 059	638
4 rooms and more	603	830	690

### Buildings under construction at the end of the year

	1997	2006	2007
<b>Under construction</b>	<b>138</b>	<b>367</b>	<b>264</b>
Apartments 1–3 rooms	735	1 711	1 275
4 rooms and more	471	1 913	1 468

### New constructions

	1997	2006	2007
<b>Total</b>	<b>135</b>	<b>212</b>	<b>343</b>
Single family dwellings	20	15	68
Multiple family dwellings	33	91	143
Residential buildings with business premises	8	17	31
Other residential housing	3	1	1
Utility buildings	71	88	100

**Building stock by construction period**

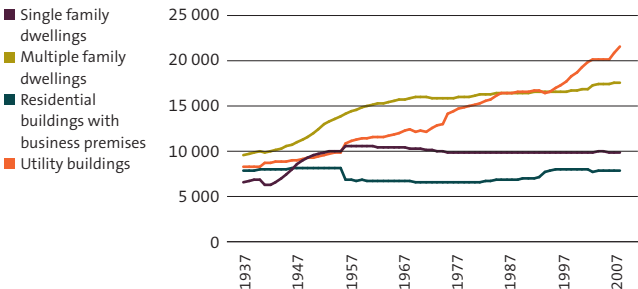
	1997	2006	2007
<b>Total</b>	<b>52 311</b>	<b>56 080</b>	<b>56 847</b>
Before 1931	18 163	18 285	18 601
1931–1960	19 568	19 637	19 796
1961–1990	12 652	12 901	12 836
1991–2000	1 928	3 018	3 002
After 2000	–	2 239	2 612

**Building stock by building type**

	1997	2006	2007
<b>Total</b>	<b>52 311</b>	<b>56 080</b>	<b>56 847</b>
Single family dwellings	9 878	9 854	9 917
Multiple family dwellings	16 631	17 527	17 605
Residential buildings with business premises	7 376	7 457	7 467
Other residential housing	641	361	357
Utility buildings	17 785	20 881	21 501

**Building stock by type of owner**

	1997	2006	2007
<b>Total</b>	<b>52 311</b>	<b>56 080</b>	<b>56 847</b>
Natural persons	26 448	28 971	29 491
Corporations	7 674	8 131	8 165
Pension funds	1 643	1 470	1 463
Associations private foundations	1 643	2 082	2 146
Building cooperatives	8 072	8 276	8 355
Public property	6 388	6 696	6 771
Religious communities	443	454	456

**Housing stock**

## CONSTRUCTION AND HOUSING

### New dwellings

	1997	2006	2007
<b>Total</b>	<b>404</b>	<b>1 719</b>	<b>2 263</b>
1 Room	6	61	85
2 Rooms	118	241	328
3 Rooms	110	583	646
4 Rooms	113	587	833
5 Rooms	43	183	311
6 Rooms and more	14	64	60

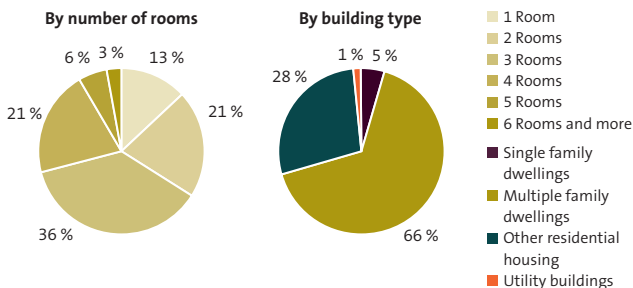
### Dwellings by number of rooms

	1997	2006	2007
<b>Total</b>	<b>194 374</b>	<b>203 839</b>	<b>205 618</b>
1 Room	28 655	26 813	26 673
2 Rooms	40 816	42 437	42 682
3 Rooms	72 754	75 007	75 406
4 Rooms	37 997	42 366	43 165
5 Rooms	9 013	11 631	12 018
6 Rooms and more	5 139	5 585	5 674

### Dwellings by building type

	1997	2006	2007
<b>Total</b>	<b>194 374</b>	<b>203 839</b>	<b>205 618</b>
Single family dwellings	9 914	9 854	9 917
Multiple family dwellings	122 758	133 126	134 429
Other residential housing	58 755	57 913	58 320
Utility buildings	2 947	2 946	2 952

### Stock of dwellings, 2007



## Freehold apartments Dwellings by number of rooms

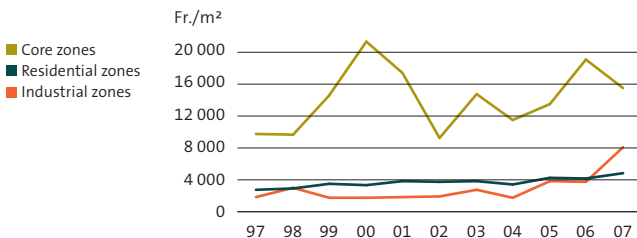
	1997	2006	2007
<b>Total</b>	<b>10 119</b>	<b>14 178</b>	<b>14 587</b>
1 Room	1 480	1 591	1 608
2 Rooms	1 884	2 339	2 370
3 Rooms	3 001	4 099	4 198
4 Rooms	2 479	3 835	3 988
5 Rooms	899	1 675	1 763
6 Rooms and more	376	639	660
Proportion of total dwellings (%)	5.2	7.0	7.1

## Vacant space and vacant apartments, (Basis 1st of June)

	1997	2006	2007
<b>Utilizable area</b>			
<b>Total vacant space (m<sup>2</sup>)</b>	<b>535 000</b>	<b>368 278</b>	<b>364 267</b>
<b>Total vacant space index (%)</b>	<b>4.80</b>	<b>3.34</b>	<b>3.27</b>
Offices/practices (m <sup>2</sup> )	292 138	277 772	248 069
Sales (m <sup>2</sup> )	17 796	12 787	7 992
Workshop/production (m <sup>2</sup> )	80 895	8 235	14 959
Storage/archives (m <sup>2</sup> )	134 735	60 097	65 742
Other (m <sup>2</sup> )	9 436	9 387	27 505
<b>Apartments</b>			
<b>Total empty apartments</b>	<b>1 070</b>	<b>259</b>	<b>180</b>
<b>Total empty apartments index (%)</b>	<b>0.55</b>	<b>0.13</b>	<b>0.09</b>

## Price of developed property

## Prices on developed property sold by mutual agreement



## TOURISM

### Hotel demand, 2007

	Arrivals	Overnight stays	Change (%)	Proportion of total (%)
<b>Total</b>	<b>1 374 020</b>	<b>2 582 876</b>	<b>8.2</b>	<b>100.0</b>
<b>Swiss</b>	<b>326 468</b>	<b>544 316</b>	<b>6,1</b>	<b>21,1</b>
<b>Foreign total</b>	<b>1 047 552</b>	<b>2 038 560</b>	<b>8,8</b>	<b>78,9</b>
Germany	239 978	451 445	11.3	17.5
USA	140 458	280 544	1.5	10.9
Great Britain	110 644	200 628	13.4	7.8
Italy	40 567	74 255	14.2	2.9
France	40 108	67 761	7.5	2.6

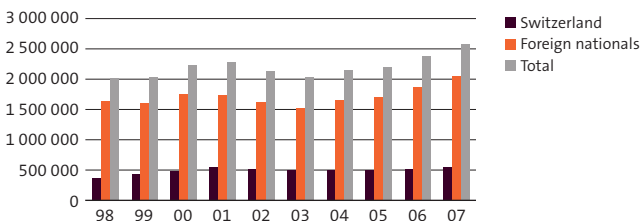
### Structural data, 2007

	All enterprises	One star	Two star	Three star	Four star	Five star	Not classified
Enterprises	111	4	6	37	26	7	31
Rooms	6 942	390	520	1 687	2 684	760	901
Guest beds	11 658	872	847	2 799	4 427	1 058	1 655
Room occupancy (%)	74.7	83.7	75.1	80.3	75.7	73.1	58.6
Bed occupancy (%)	61.0	58.9	71.5	65.6	60.3	68.7	45.6
Duration of stay (nights)	1.9	2.0	1.7	1.9	1.8	2.0	2.2

### Zurich and Switzerland, 2007

	Enterprises	Overnight stays	Change (%)	Rooms	Guest beds
City of Zurich	111	2 582 876	8.2	6 942	11 658
Airport region	22	796 214	2.8	2 235	3 631
Agglomeration Zurich	243	4 036 177	9.7	11 570	19 419
Switzerland	4 905	35 821 139	4.4	125 519	237 934

### Overnight stays by origin of the visitors



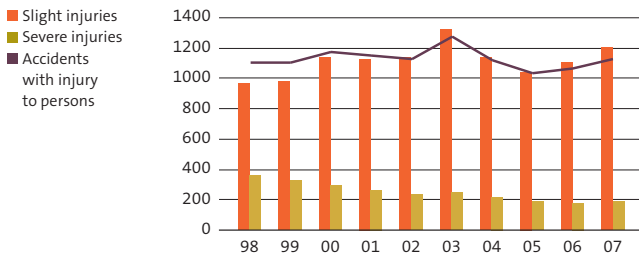
## Cars and parking spaces

	1996	2005	2006
<b>Cars</b>	<b>139 423</b>	<b>139 930</b>	<b>139 028</b>
0–3 years	34 989	36 494	34 779
4–5 years	23 535	23 250	21 621
6–10 years	48 949	43 509	45 310
11 years and more	31 950	36 677	37 318
<b>Parking spaces</b>	<b>264 234</b>	<b>267 732</b>	<b>266 381</b>
On public ground	47 546	49 697	49 667
On private ground	216 688	218 035	216 714
Outdoor	85 241	85 286	83 547

## Road traffic accidents

	1998	2006	2007
<b>Accidents involving persons</b>	<b>1 102</b>	<b>1 067</b>	<b>1 129</b>
<b>Injured persons</b>	<b>1 320</b>	<b>1 284</b>	<b>1 388</b>
Slightly	966	1 106	1 203
Severely	354	178	185
Women	594	581	617
Men	726	703	771
<b>Fatalities</b>	<b>9</b>	<b>10</b>	<b>6</b>
Vehicles involved	1 998	1 939	2 056
Pedestrians involved	247	207	238

## Road traffic accidents with injury to persons



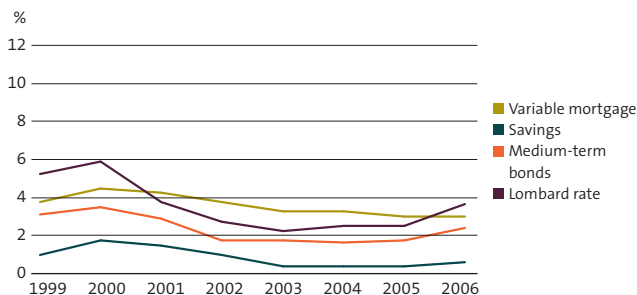
## Banking establishments, 2006

	Number of banking establishments		Balance sheet sum (Mio. Fr.)	Proportion Switzerland (%)
	City of Zurich	Switzerland	City of Zurich	
<b>Total</b>	<b>82</b>	<b>208</b>	<b>2 460 176</b>	<b>85,1</b>
Big banks	2	2	2 198 372	100,0
Cantonal banks	1	23	92 632	37,0
Regional banks/savings banks	2	76	829	1,0
Agricultural credit cooperative banks	–	1	...	...
Merchant banks	1	6	28 889	62,9
Investment banks/private banks	21	31	77 945	63,9
Foreign banks	53	67	61 072	34,3
Other	2	2	437	13,7

## Jobs in the credit sector

	Total employees		Change 2001–2005	
	2001	2005	absolute	in %
<b>Credit sector in total</b>	<b>39 512</b>	<b>37 165</b>	<b>–2 347</b>	<b>–5,9</b>
Big banks	21 801	21 278	–523	–2,4
Cantonal banks	3 523	2 652	–871	–24,7
Regional banks/savings banks	76	70	–6	–7,9
Merchant banks	1 692	1 459	–233	–13,8
Investment banks	3 181	3 161	–20	–0,6
Foreign banks	6 342	5 989	–353	–5,6
Private bankers	585	463	–122	–20,9
Other	2 312	2 093	–219	–9,5

## Interest rates at year end (ZKB)





<b>Employees of the city</b>			
Department/Area total	2005	2006	proportion women (%)
<b>Total persons</b>	<b>25 518</b>	<b>25 701</b>	<b>55.0</b>
<b>Members and employees of authorities together</b>	<b>20 772</b>	<b>20 981</b>	<b>51.2</b>
City teachers	3 179	3 110	73.7
Administration of foundations classed as legal entities	127	123	72.4
Personnel in training	1 440	1 487	66.7
<b>Total number of jobs</b>	<b>19 947.0</b>	<b>20 306.0</b>	<b>48.4</b>
Members and employees of authorities together	17 214.3	17 558.0	44.7
General administration	136.2	133.6	54.3
Prosecution authorities	159.3	152.3	42.6
Magistrates' offices	16.2	16.2	75.3
Presidential department	344.9	357.4	58.3
Department of finance	606.6	663.3	37.9
Department of police	2 493.1	2 557.0	22.6
Department of health and the environment	5 209.3	5 336.8	72.6
Department of civil engineering and waste disposal	1 591.5	1 577.8	12.8
Department of structural engineering	581.0	559.4	43.1
Department of industrial companies	3 238.4	3 305.9	13.7
Department of education and sport	1 524.2	1 606.9	67.4
Department of social welfare	1 313.7	1 291.3	62.8
City teachers	1 263.9	1 230.4	78.4
Administration of foundations classed as legal entities	82.3	84.6	67.9
Personnel in training	1 386.4	1 433.0	66.3

## SOCIAL SECURITY / HEALTH

### Social welfare

	Number			Change (%)
	1999	2005	2006	2005-06
Social welfare: cases	10 427	13 799	13 597	-1.5
Annual average: cases	6 510	9 131	9 256	1.4
Social welfare: people	17 686	22 530	22 130	-1.8

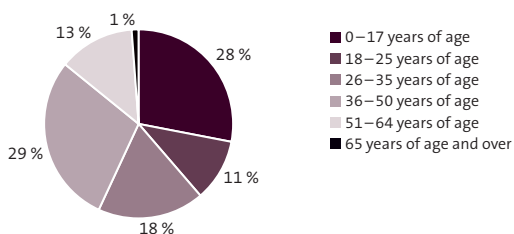
### Additional benefits to old age and survivors insurance benefits

	1996	2005	2006
<b>Pensioners</b>	<b>15 559</b>	<b>17 731</b>	<b>18 164</b>
Swiss nationals (%)	89.4	82.6	82.1
Foreign nationals (%)	10.6	17.4	17.9
<b>Additional benefits paid (1000 Francs)</b>	<b>248 305</b>	<b>373 432</b>	<b>388 621</b>
Old-age pensions (1000 Francs)	172 658	218 001	227 040
Handicapped pension (1000 Francs)	73 433	150 636	156 713
Survivors (1000 Francs)	2 214	4 795	4 868
Average benefit per month (Francs)	1 453	1 953	1 999

### Hospitals and physicians

	1996	2005	2006	Capacity utilization (%)
<b>Hospital beds in total</b>	<b>6 140</b>	<b>6 095</b>	<b>5 981</b>	<b>91.6</b>
Cantonal hospitals	...	1 149	1 118	90.7
City hospitals	...	2 471	2 402	94.2
Other hospitals	...	1 659	1 643	88.2
Care homes / homes for the elderly	...	816	818	92.3
<b>Physicians</b>	<b>1 432</b>	<b>1 744</b>	<b>1 743</b>	...
<b>Dentists</b>	<b>556</b>	<b>675</b>	<b>645</b>	...

### Social welfare by age class, 2006



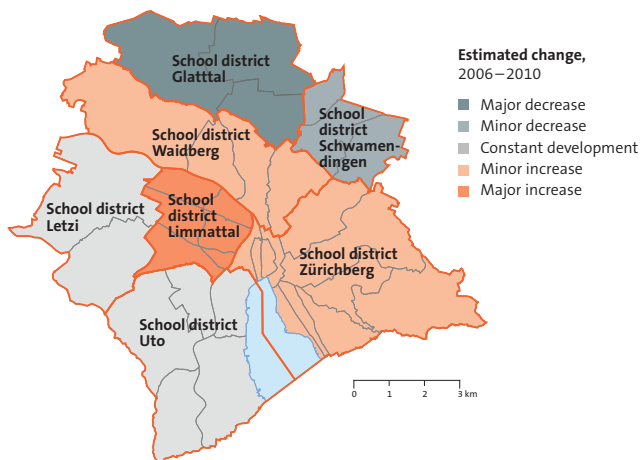
**Pupils**

	1996 ~ 07	2005 ~ 06	2006 ~ 07
Day nurseries	5 139	3 899	4 281
City schools	27 339	26 181	25 484
Kindergarten	5 196	5 082	4 712
Elementary school	22 143	21 099	20 772
Primary school	14 250	13 961	13 885
Secondary school	5 515	5 335	5 261
Other schools	2 378	1 803	1 626
Cantonal schools	8 120	8 246	8 368
High school	7 263	7 461	7 564
Schools leading to diploma	720	785	804
Vocational schools	33 981	36 954	36 190

**Universities**

	1996 ~ 07	2005 ~ 06	2006 ~ 07
ETH Zurich	10 631	12 705	13 373
Proportion of women (%)	23.2	29.3	29.6
University of Zurich	19 425	23 817	23 910
Proportion of women (%)	47.0	54.3	54.8
Teacher training college	...	2 093	1 969
Proportion of women (%)	...	77.0	75.8
Volkshochschule	14 435	13 231	12 915

**Estimated development of numbers of elementary school students by school district**



## CULTURE AND SPORT

### Theatre, Concerts, 2006

	Presentations	Visitors	Average seat occupancy (%)
Opera house	287	250 027	77.4
Schauspielhaus theatre	578	160 988	...
Tonhalle concert hall	84	93 286	76.4
Moods im Schiffbau	320	60 280	82.0
Hechtplatz theatre	266	47 823	72.0
Theaterhaus Gessnerallee	361	32 608	82.0
Weisser Wind	176	28 651	67.8

### Cinemas

	1996	2005	2006
Number of cinemas	18	19	19
Cinema screens	46	53	53
Seats	9 035	10 045	10 077
Paying visitors	2 784 615	2 276 465	2 359 843
Presentations	59 645	63 802	58 267

### Museums (visitors)

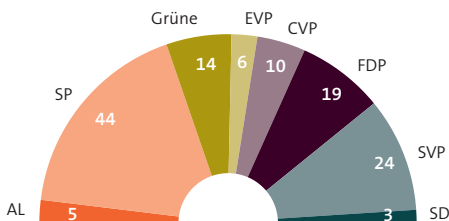
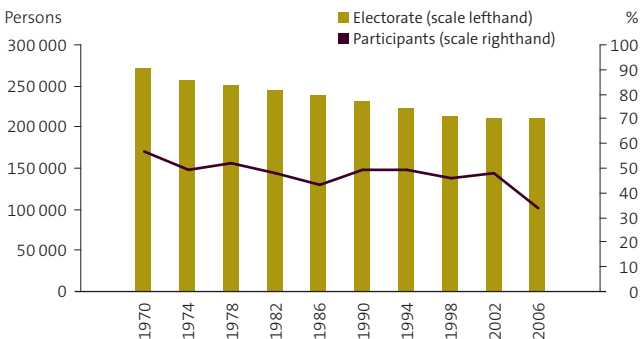
	1996	2005	2006
Kunsthaus Zurich	264 739	310 126	287 260
Zurich National Museum	147 826	193 690	194 990
Museum of Design	50 321	67 187	93 472
Zoological Museum	72 222	83 070	86 613
Helmhaus	23 670	26 335	43 635
Museum Rietberg	81 240	32 253	25 962

### Sport (admissions)

	1995 ~ 96	2005	2006
Letzigrund stadium	206 500	257 700	110 600
Allmend sports venue	75 988	36 050	38 804
Ice rinks Heuried and Oerlikon	136 441	132 887	148 738
Public tennis courts	...	22 546	19 363
Outdoor swimming pools	776 197	2 659 954	2 642 682
Indoor swimming pools	819 032	949 792	968 297
Swimming facilities of schools	352 323	397 134	396 972

**City council, as of 1st August 2008**

Elmar Ledergerber (SP)	Presidential Department
Gerold Lauber (CVP)	Department of education and sport
Kathrin Martelli (FDP)	Department of structural engineering
Esther Maurer (SP)	Department of police
Robert Neukomm (SP)	Department of health and the environment
Ruth Genner (Grüne)	Department of civil engineering and waste disposal
Andres Türlér (FDP)	Department of industrial companies
Martin Vollenwyder (FDP)	Department of finance
Martin Waser (SP)	Department of social welfare

**Distribution of seats in the municipal council****Voter participation in municipal elections**

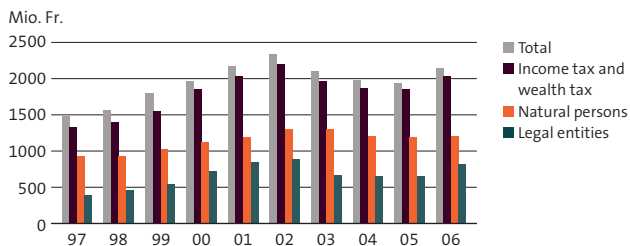
## PUBLIC FINANCES

Taxes	2005	2006	2005/06
<b>Natural persons</b>			
Taxpayers	227 743	229 329	1 586
Taxable overall income (1000 Francs)	12 030 758	12 753 010	722 252
Taxable overall assets (1000 Francs)	60 598 618	61 362 768	764 150
Federal tax (1000 Francs)	742 798	720 400	- 22 398
Municipal tax (1000 Francs)	886 355	859 165	- 27 190
<b>Legal entities</b>			
Taxpayers	19 906	20 572	666
Simple federal tax (1000 Francs)	507 327	650 333	143 006
Municipal tax (1000 Francs)	618 939	793 407	174 468

### Municipal accounts

	2000	2005	2006
<b>Current account (Mio. Fr.)</b>			
Expense	6 219.3	6 972.2	7 026.8
of which for personnel	1 654.4	2 088.7	2 132.9
of which for materials	1 128.9	1 357.2	1 436.7
Income	6 528.0	6 973.7	7 101.8
of which are taxes	1 968.1	1 931.9	2 145.8
of which are fees	1 851.2	2 157.0	2 244.5
Excess income result	308.7	1.5	75.0
<b>Investment appraisal (Mio. Fr.)</b>			
Expenditure	458.2	770.2	744.5
of which is for materials	430.2	702.0	655.4
Income	78.3	90.0	102.1
Net investments	379.9	680.2	642.3
<b>Job numbers</b>			
Employees of the city	18 914.3	18 478.3	18 788.4

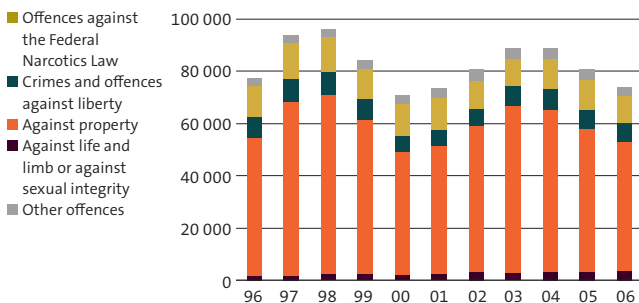
### Municipal taxes



## Recorded Crimes

	1997	2005	2006
<b>Total</b>	<b>93 943</b>	<b>80 758</b>	<b>74 196</b>
Against life and limb	1 214	2 228	2 298
Homicides	20	27	23
Bodily harm	704	1 082	1 055
Against property	66 175	54 652	49 816
Breaking and entering	10 007	6 290	5 725
Pick-pocketing	4 738	4 584	3 272
Material damage caused by breaking and entering	14 489	9 240	8 961
Other material damage	6 727	5 663	5 100
Crimes and offences against liberty	9 009	7 485	7 211
Against sexual integrity	828	1 068	1 076
Crimes and offences against public safety	315	271	255
Forgery	1 940	2 323	1 726
Other offences pursuant to the Swiss penal Code	657	1 315	1 495
Offences against the Narcotics Law	13 805	11 416	10 319

## Punishable offences



## CITY OF ZURICH IN COMPARISON

### City of Zurich in comparison, 2006

	City of Zurich	Canton of Zurich	Switzerland
<b>Resident population</b>	<b>370 062</b>	<b>1 274 383</b>	<b>7 508 739</b>
Proportion of women (%)	51.0	51.0	51.0
Proportion of foreign nationals (%)	30.0	21.9	20.7
Proportion of persons under 20 years (%)	15.7	20.2	21.7
Proportion of persons aged 65 years and older (%)	16.8	15.9	21.0
<b>Jobs (2005)</b>	<b>329 014</b>	<b>729 800</b>	<b>3 698 343</b>
Full-time employees (%)	68.3	68.8	69.9
2nd Sector (%)	10.6	19.4	27.0
3rd Sector (%)	89.4	80.6	73.0
<b>Unemployed</b>	<b>7 010</b>	<b>18 772</b>	<b>109 012</b>
Unemployment rate (%)	3.6	2.6	2.8
<b>Apartments</b>	<b>203 839</b>	<b>642 295</b>	<b>3 791 574</b>
Number of apartments with 5 rooms and more (%)	8.5	22.1	24.9
Vacant apartment index	0.09	0.80	1.07
<b>Overnight stays</b>	<b>2 386 037</b>	<b>3 850 409</b>	<b>34 848 426</b>
Number of foreign visitors (%)	78.5	72.0	56.4

	Basel	Bern	Geneva	Lausanne
<b>Resident population</b>	<b>187 792</b>	<b>127 882</b>	<b>185 893</b>	<b>129 265</b>
Proportion of women (%)	52.4	53.0	52.5	52.6
Proportion of foreign nationals (%)	31.2	21.1	44.2	38.5
Proportion of persons under 20 years (%)	16.7	14.7	17.9	19.3
Proportion of persons aged 65 years and older (%)	20.5	18.2	15.6	15.7
<b>Jobs (2005)</b>	<b>149 342</b>	<b>148 145</b>	<b>133 813</b>	<b>85 339</b>
Full-time employees (%)	68.5	63.6	70.9	68.1
2nd Sector (%)	23.0	11.1	7.2	9.3
3rd Sector (%)	77.0	88.9	92.8	90.7
<b>Unemployed</b>	<b>2 973</b>	<b>2 813</b>	<b>12 922</b>	<b>4 895</b>
Unemployment rate (%)	3.0	3.8	5.9	5.6
<b>Apartments</b>	<b>104 716</b>	<b>73 615</b>	<b>104 205</b>	<b>70 897</b>
Number of apartments with 5 rooms and more (%)	11.8	8.5	8.2	10.6
Vacant apartment index	1.40	0.41	0.39	0.33
<b>Overnight stays</b>	<b>874 746</b>	<b>648 708</b>	<b>1 856 534</b>	<b>696 755</b>
Number of foreign visitors (%)	74.8	57.5	86.8	71.7





552 pages, German  
CHF 64.–, including CD-ROM  
Available from bookshops  
or from Statistik Stadt Zürich  
[www.stadt-zuerich.ch/statistik](http://www.stadt-zuerich.ch/statistik)  
ISBN 978-3-9522932-8-7  
ISSN 0256-7741

The Statistical Yearbook provides an accurate statistical profile of the City of Zurich. It is a reference work for everyone interested in the many facets of the town. The yearbook is attractive and accessible, also thanks to the portraits of the various quarters, the wealth of helpful information on the methods used in collecting and processing the data, and the glossary that accompanies each chapter.

The yearbook is supplemented by a CD-ROM containing all tables, some in significantly expanded form. They can be printed out and are ready for further processing. The full-text search function provides swift access to the data. More than 40 retrospective tables covering the subject matter «building and housing» and «real property» are also included on the CD-ROM.

The CD features a wealth of bonus material, for example a further standard statistical reference book «Statistik der Schweizer Städte», which covers a number of Swiss towns.

**Unemployment rate** The unemployment rate is calculated on the basis of current unemployment figures divided by the number of people of a working age according to the census of 2000. People of a working age include employed and unemployed persons.

**Employees** Persons working more than 6 hours per week, regardless of whether they receive payment or not. The term employees always relates to full-time and part-time employees. The terms «employees» and «jobs» are used synonymously.

**Building stock** The total of all buildings above ground and underground.

**Vacant space index** Percentage of vacant space in relation to the overall utilizable space

**Permanent residents** Permanent residents refers to foreign nationals who have been granted permanent residency after living in Switzerland for five or ten years. The right to reside in Switzerland is unlimited and unconditional.

**Job value factor** The job number factor is calculated by dividing the employee's annual working time by the annual working time of an employee holding a full-time position. Given that normal full-time employment is 42 hours per week, a weekly working time of 21 hours is therefore equal to a job value factor of 0.5.

**Taxable income of natural persons** This equates to the actual income after the deduction of social contributions (as per taxation law).

**Taxable wealth of natural persons** Taxable wealth equates to the total of all assets minus debts (as per taxation law).

**Part-time employees 1** Employees working 50% or more but less than 90% of the company's usual weekly working time.

**Part-time employees 2** Employees working at least 6 hours per week but less than 50% of the company's usual weekly working time.

**Volkshochschule** A foundation of adult education subsidised by the canton and municipalities.

**Full-time equivalent** The full-time equivalent is calculated by multiplying the number of employees divided into three categories (full-time, part-time 1 and part-time 2) by the average degree of employment for each category. This converts part-time jobs to full-time jobs to facilitate comparisons.

**Full-time employees** Employees working at least 90% of the company's usual weekly working hours.

**Resident population, economic** A person is an economic resident of the municipality in which he spends the most of his time, whose infrastructure he uses most of all and from where he travels to work or school. The economic resident population also includes people who live in the community from Mondays to Fridays, people taking up brief residency and asylum seekers.

 **Further sources of information**

**Subscribe our e-mail newsletter  
or our SMS-News.  
[www.stadt-zuerich.ch/statistik](http://www.stadt-zuerich.ch/statistik)**